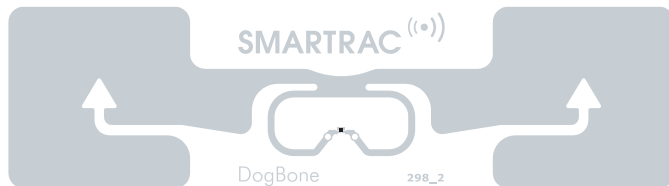


## DOGBONE

Excellent global performance even on difficult-to-tag materials.



DogBone tags and inlays are designed for global supply chain, industrial and RTI applications offering excellent performance in demanding logistical and industrial applications.

DogBone tags and inlays have good tolerance against the detuning effect of high-electric materials providing effective global performance even on difficult-to-tag materials.

### Benefits:

- ▶ High performance product for global supply chain management, industrial, logistic and RTI applications.
- ▶ Excellent performance even on difficult-to-tag materials.
- ▶ Optimum size product for 4 inch wide converted labels.
- ▶ ISO 9001:2008 Quality Management System and ISO 14001:2004 Environment Management System support.
- ▶ Unique TID.

### Overview

#### Operating Frequency

860 - 960 MHz

#### Integrated Circuit (IC)

NXP U-Code G2iL

#### Antenna Size

88 x 24 mm (3.47 x 0.94 in)

#### Die-cut Size

97 x 27 mm (3.82 x 1.06 in)

#### International Standards

EPC Class 1 Gen 2

ISO 18000-6C

#### Quality Assurance

100% performance tested

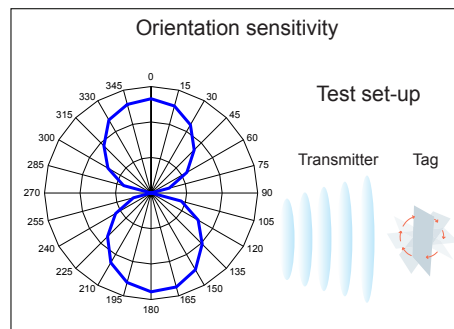
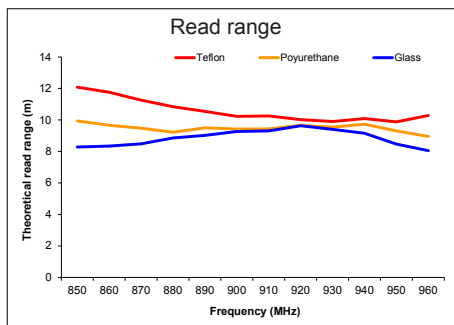
### Application Areas

- ▶ Industrial Automation
- ▶ Supply Chain Management
- ▶ Sports Timing

## DOGBONE

Technical Features	
IC	NXP U-Code G2iL
Memory	EPC memory 128 bit
Frequency	860-960 MHz
Antenna Size	88 x 24 mm / 3.47 x 0.94"
Die-cut Size	97 x 27 mm / 3.82 x 1.06"
Web Width	100 mm / 3.94"
Operating Temperature	-40°C to 85°C / -40°F to 185°F
Bending Diameter (D)	> 50 mm, tension max. 10 N
Delivery Formats	Dry inlay, wet inlay, tag
Adhesive	Acrylic, water borne adhesive
Adhesive Usage Temperature	min. -10°C to 120°C / min. 14°F to 248°F
Qty/Reel	20,000 dry inlays per reel, 5,000 wet inlays per reel, 3,000 tags per reel
Core Size	76 mm / 3"
Shelf Life: minimum of 2 years from the date of manufacture in	20°C / 68°F, 50% RH

SMARTRAC TECHNOLOGY GROUP uses three different qualification methods to evaluate the quality and reliability of RFID inlay and tag products. Products are tested according to IEC 60068-2-67 (temperature and humidity), JESD22-A104-B (temperature cycling) and an in-house developed bending test.



All the graphs are indicative: performance in real life applications may vary. The data has been determined based on calculations for transmitters with a 2W ERP output power level.



RoHS CE

For further information, please contact our sales representatives:

**Sales Europe**  
 SMARTRAC TECHNOLOGY GROUP  
 Hanauer Landstrasse 291a  
 60314 Frankfurt am Main  
 Germany  
 Tel. +49 69 904 3579 1011  
 Fax +49 69 904 3579 1015  
 sales.emea@smartrac-group.com

**Sales Americas**  
 SMARTRAC TECHNOLOGY Fletcher Inc.  
 267 Cane Creek Road  
 Fletcher, NC 28732  
 United States of America  
 Tel. +1 866 901 7343  
 Fax +1 828 651 6063  
 sales.americas@smartrac-group.com

**Sales APAC**  
 SMARTRAC TECHNOLOGY PTE. Ltd.  
 SINGAPORE  
 6 Greenleaf Walk  
 Amsterdam Building 2-8  
 Singapore 279226  
 Tel. +60 4 489 36-0  
 Fax +60 4 489 36-50  
 sales.apac@smartrac-group.com