

**PS-3415/3415E**  
**Fanless LCD Touch Terminal**  
**User Manual**



## Package Contents

- ✓ Fanless LCD touch terminal (x 1)
- ✓ Power adaptor (x 1)
- ✓ Power cord (x 1)
- ✓ User Manual (x 1)
- ✓ Recovery DVD (x 1)  
(for pre-loaded OS model only)

## Product Features

- Fanless terminal
- Intel® Celeron® Bay Trail N2807 Celeron processor, up to 2.16 GHz, Dual Core, 1MB Cache for PS-3415 / Intel® Celeron® Processor J1900 (2M Cache, up to 2.42 GHz) for PS-3415E
- Foldable base that allows PS Series to be configured into different configurations
- Projected-capacitive touch
- Integrated structure for side mount upgrade kit: SA-105/205/305/405/505; back mount display: LM-6807U / 6810U and PD-360R/360UE/2609UE/6807U; 40-key dynakey attachment with MSR or RFID option: KP-500
- Water resistant structure designed for easy cleaning

## Terminal from shipping mode to operation mode

In consideration of proper packaging, before shipping, the terminal is folded, staying in shipping mode. Thus, when receiving the product, you will find that the terminal is well folded, as shown below.

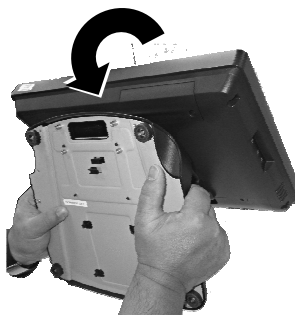


Before operating this terminal, unfold it and make this terminal rise in operation mode by referring to the following steps. Here, an equivalent model with GEN 7 base is taken below for example.

1. Firstly, lift this terminal gently to make it to be unfolded.



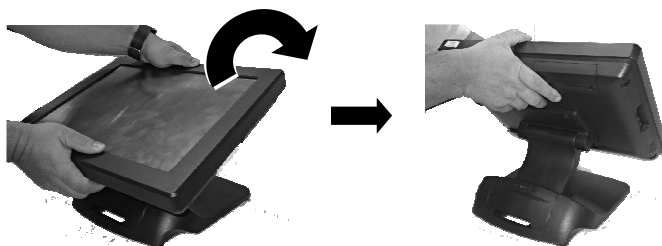
2. Overturn this terminal in the direction as indicated by the arrow in the right figure.



3. Place this terminal on a flat table.



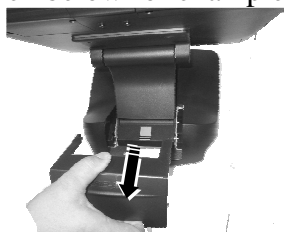
4. Tilt this terminal to a degree in the direction as indicated by the arrow below.



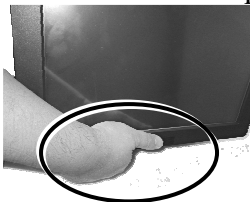
### **Terminal from operation mode to shipping mode**

To fold this terminal, refer to the following steps. Here, an equivalent model with GEN 7 base is taken below for example.

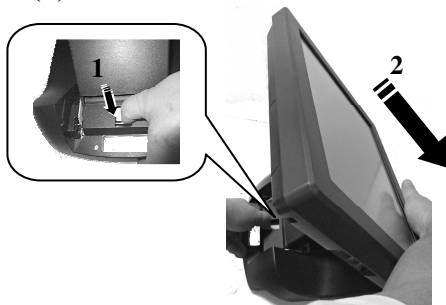
1. Remove the cable cover.



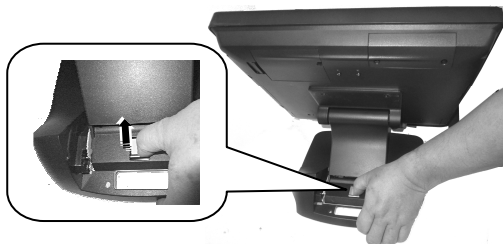
2. Carefully hold the lower rim of the display.



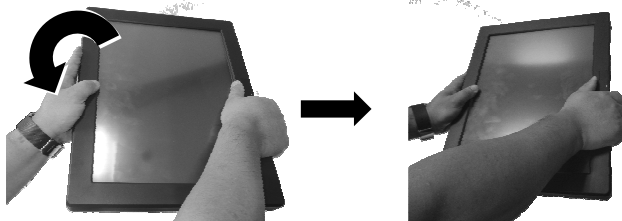
3. Push the base-folding lever in the direction as indicated by the arrow below (1). Then, the display will be loosen and go down (2).



4. When the display goes down to a degree, loose the base-folding lever, as shown in the direction as indicated by the arrow below.

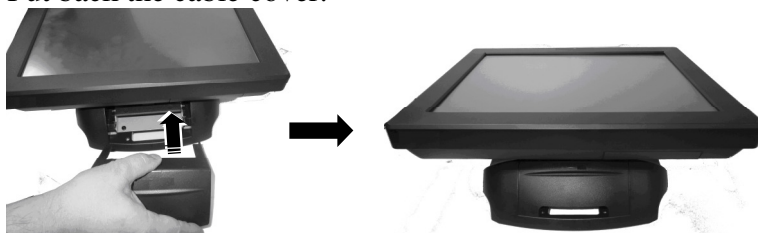


5. Then, gently tilt the display in the direction as indicated by the arrow below until the display is well folded.



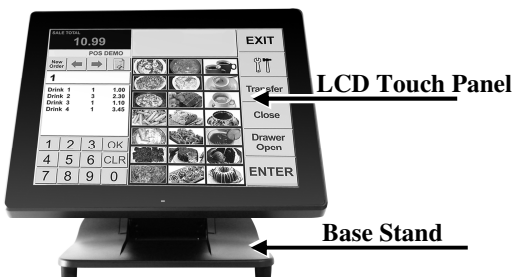


6. Put back the cable cover.

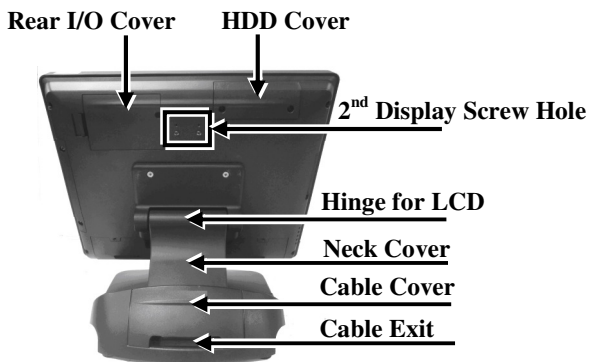


## Views of the PS-3415/3415E

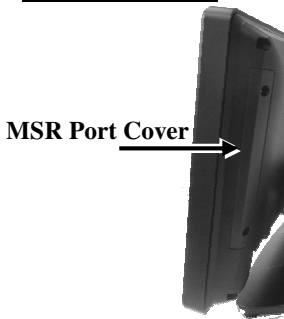
### Front View



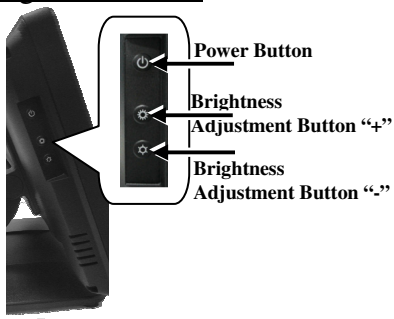
### Rear View



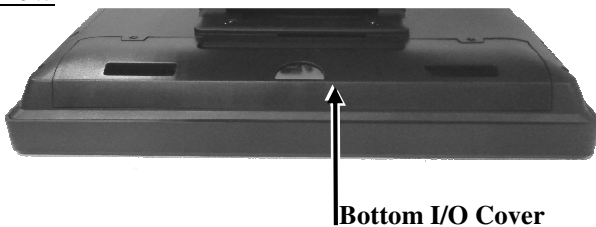
### Left Side View



### Right Side View

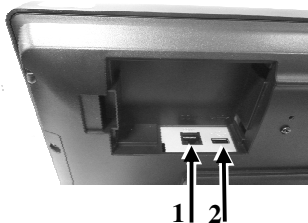


### Bottom View



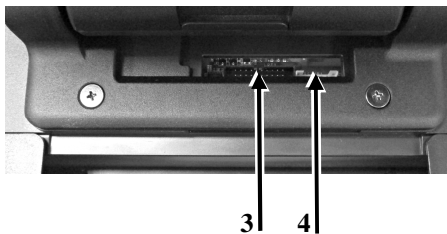
## **View of I/O Interface**

### Top I/O Ports



- 1 COM4 Port
- 2 USB 2.0 Port

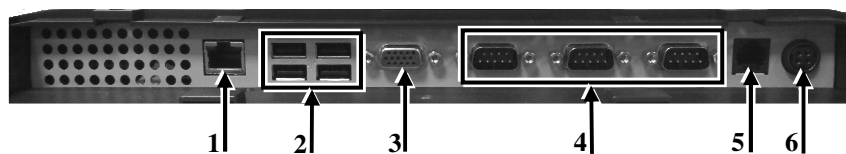
### Rear I/O Ports



- 3 Parallel (LPT) Port Connector
- 4 PS/2\_Keyboard Pin Header

**\*The top I/O ports are provided for COM-based and USB-based peripheral devices, for example, customer display.**

## Bottom I/O Ports



- |   |                       |   |                              |
|---|-----------------------|---|------------------------------|
| 1 | RJ45 LAN Port         | 2 | USB 2.0 Port                 |
| 3 | VGA Port              | 4 | COM Port<br>(COM3/COM2/COM1) |
| 5 | RJ11 Cash Drawer Port | 6 | 12VDC-IN Power Jack          |

## **Installing Optional Upgrade Kits and Peripherals**

PS-3415/3415E can work with multiple optional upgrade kits and peripheral devices, such as magnetic stripe reader (MSR), LCD monitor, cash drawer and the like.

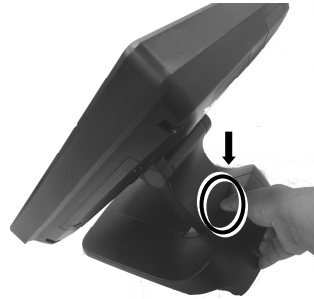
Before installing an optional upgrade kit and/or peripheral device, make sure that the system is powered off and the external power source is removed from the POS box to prevent electric hazard! Failure to follow the warning description will void the product warranty!

For the detailed instruction, refer to each of the user manuals of the optional upgrade kits and peripheral devices.

## Connecting Power Adapter and I/O Cables

Before connecting power adapter and I/O cables to the I/O ports of PS series terminal, please route and arranging the cables. Refer to the following step-by-step instruction of cable routing and arrangement for the details. Here, an equivalent model with GEN 7 base is taken below for example.

1. Press the circled section of the cable cover with your thumb.



2. Pull out the cable cover.



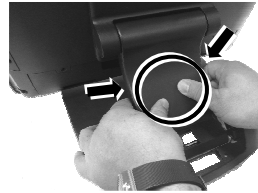
3. Push and tilt the terminal to the end in the direction as shown by the arrow.



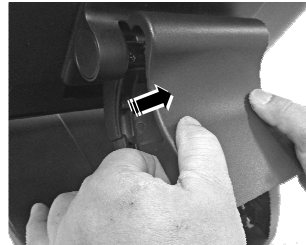
4. Determine that the terminal is tilted to the end, as shown in the right figure.



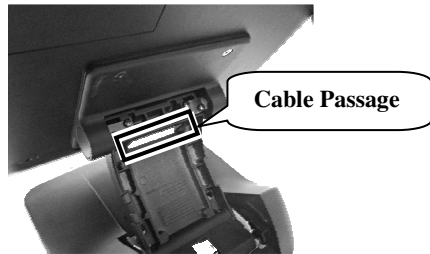
5. Press the circled section with two thumbs and pull by force the two sides of the locking hook with two forefingers as indicated by the arrow.



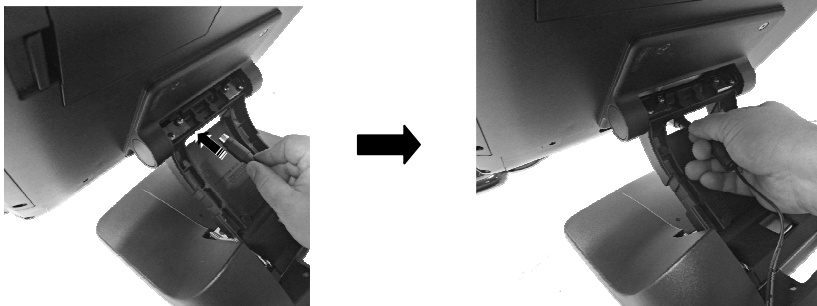
6. Remove the neck cover from the base stand.



7. Tilt the terminal slightly at a little angle in the direction as shown by the arrow, making cables easily pass through the cable passage.



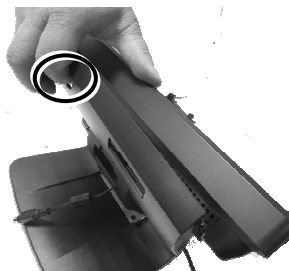
8. Make the connector, which will be connected to the I/O port of the terminal, pass through the cable passage of base stand.



9. Push and tilt the terminal to the end in the direction as shown by the arrow.



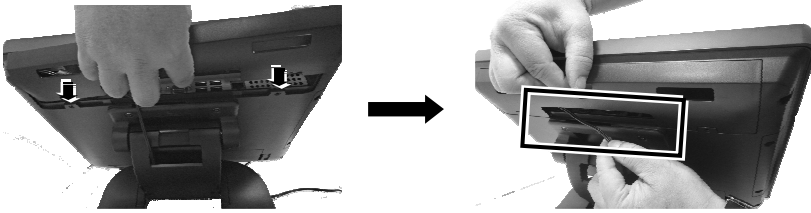
10. Remove the bottom I/O cover with your forefinger inserting the middle hole of the cover.



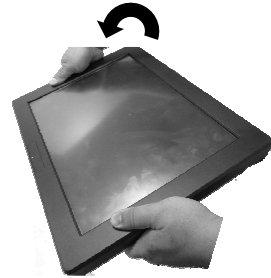
11. Connect the connector of the power adapter to the 12VDC-IN power jack.



12. Cover the bottom I/O interface and gather the I/O cables to the circled cable arrangement area, as shown below.



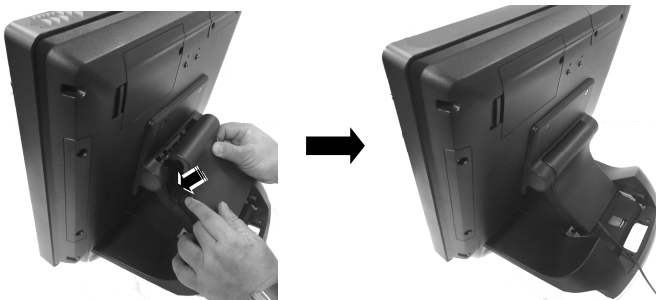
13. Push and tilt the terminal to the end in the direction as shown by the arrow.



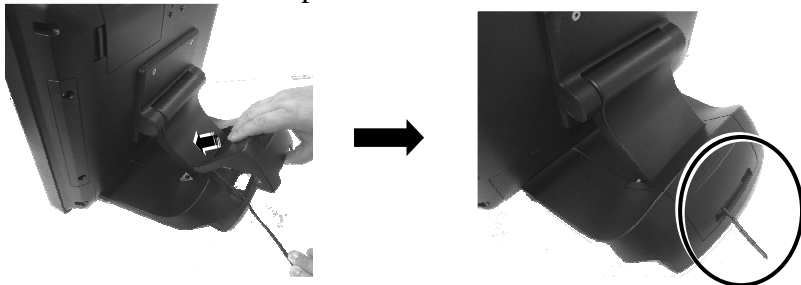
14. Arrange well the I/O cable located at the area of neck cover.



15. Shield the I/O cable arrangement area on the neck of the base stand with the neck cover.



16. Shield the I/O cable exposure area with the cable cover.



## Powering ON the PS-3415/3415E

After connecting the power cable to the power jack of the terminal, press the power button to power on the terminal. To power it off, press the power button again.



Once powering off the system, if you want to power it on again, please wait at least 3 seconds.

If the system hangs due to a reason, such as software resource conflict, please press and hold the power button for over 10 seconds to forcibly shut down the system.

## Power LED Indicator

There is a power LED indicator located at the center of lower rim of the front side of LCD panel. After powering ON or OFF the terminal, you can read the power status from the power LED indicator. The LED status is described below.



LED	Status	Description
POWER	Solid blue	System power ON
	Solid orange	System standby



## **Installing an Operating System**

This product is highly professional equipment. Therefore, we do NOT encourage you to install any operating system into this machine without professional assistance. We shall not be responsible for any technical support to questions on this aspect. We suggest that you contact your dealer for OS installation.

## **Operating System Recovery**

For the PS-3415/3415E main system preloaded with an operating system on HDD, We provide a recovery DVD shipped with the main system for the preloaded operating system. The system integrator shall take care of software restoration after the OS is recovered.

If you plan to recover your operating system, we do NOT encourage you to recover any operating system. Please contact your service center for operating system recovery.

## **Operation Environment**

This terminal must NOT be operated in an environment with restricted ventilation. There must be at least 25 mm air clearance around any top or side ventilation holes with free flow of air around the unit at all times for system operation.

## Specifications

<b>System Configuration</b>	Processor	PS-3415: Intel® Celeron N2807, 2C, 1.58GHz/2.16GHz (Burst), 1M Cache  PS-3415E: Intel® Celeron® Processor J1900 (2M Cache, up to 2.42 GHz)
	System Memory	2GB DDR3L 1333MHz default
	Storage Device	SATA x 1 + mSATA x 1; 320GB SATA HDD default
	Power Supply	12V/40W (upgrade to 60W or higher when required)
	OS support	Windows 7 / POSReady 7 / Windows Embedded 8.1 Industry / DOS/ Linux per request
<b>Display &amp; Touch</b>	LCD	Bezel-free TFT LCD
	Resolution	1024 x 768
	Touch	Projected-capacitive touch
<b>I/O &amp; Expansion</b>	Serial Port	4, 3 x DB9 on bottom I/O plate + 1 x RJ50 on top I/O plate, 5V/12V support on all COM ports
	Parallel Port	1, via optional conversion cable
	Standard USB Port	5, 4 on bottom I/O plate + 1 on top I/O plate
	LAN Port	10 / 100 / 1000 Mb x 1
	Display Port	VGA x 1, 12V support for Posiflex monitors
	CR Port	1, control 2 CR via optional Y-cable
	PS/2 Port	Pin header inside service window
	Audio	Buzzer only
	Base Stand	7th generation foldable base stand
Power Supply	12V/40W	
<b>Environmental</b>	Operating Condition	0°C - 40°C, 20%RH - 90%RH (Equipped with HDD); 0°C - 50°C, 20%RH - 90%RH (Equipped with SSD)
	Storage Condition	-20°C - 70°C, 10%RH - 90%RH

**<MEMO>**

**<MEMO>**